

# STATE OF CALIFORNIA CONFIRMS AVENAL AT RISK FROM POLLUTION

## What is CalEnviroScreen 3.0?

CalEnviroScreen 3.0 is a tool made by the California Environmental Protection Agency to help identify communities most affected by pollution. It uses cumulative impact theory to compare pollution levels in communities across California.

## What are Cumulative Impacts?

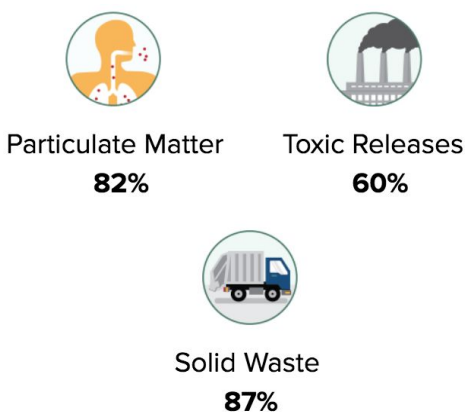
Cumulative impacts are the combination of different factors that when added together, result in a higher impact. CalEnviroScreen results are calculated by combining pollution burden and population characteristics.

**1 + 1 + 1 + 1 + 1 = TOO MUCH!**

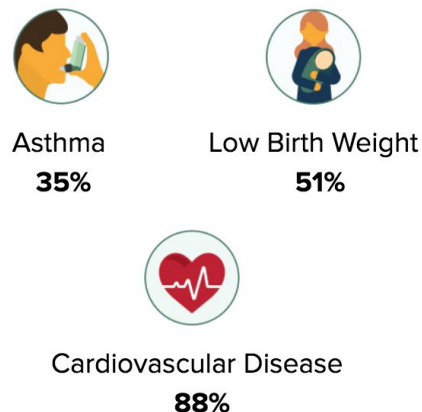
## CalEnviroScreen Results for Avenal:

The following shows the percentiles of Pollution Burden and Population Characteristics indicators for Avenal compared to the rest of California. The higher the percentile, the more that factor affects the community.

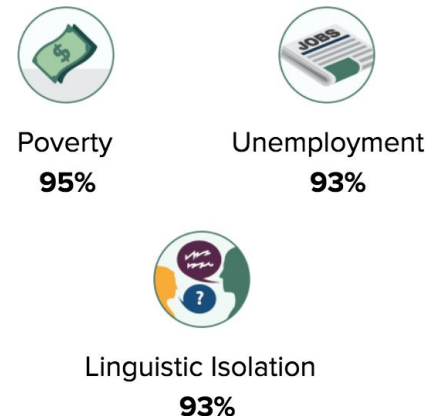
### Exposure & Environmental Effect



### Sensitive Population



### Socioeconomic Factor

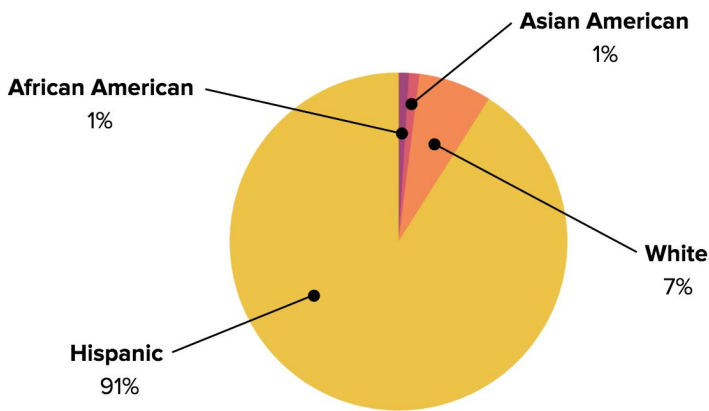


## What does this mean for Avenal?

A community with high percentiles is experiencing a higher pollution burden and is more vulnerable to pollution than a community with lower percentiles in California. Avenal scores in the 80th percentile on CalEnviroScreen 3.0.

**Avenal has a higher pollution burden than 80% of California.**

# Race/Ethnicity Profile of Avenal



- Pollution disproportionately impacts low-income communities of color, such as Avenal
- Non-English speaking residents are denied meaningful and equal opportunities to participate in decision-making processes regarding dirty industries due to discriminatory government agencies

**Environmental Justice seeks to eliminate environmental racism and promote healthy, inclusive, and equitable practices.**

Contact any of the following for more information:



## Greenaction for Health and Environmental Justice

[www.greenaction.org](http://www.greenaction.org)

facebook: @Greenaction4EJ

Miguel Alatorre Jr.

Community Organizer and Policy Advocate  
Greenaction for Health and Environmental Justice

(559) 816-3561

[miguel@greenaction.org](mailto:miguel@greenaction.org)

Maricela Mares-Alatorre

Community Organizer and Policy Advocate  
Greenaction for Health and Environmental Justice

(559) 816-9298

[alatmig@netzero.net](mailto:alatmig@netzero.net)

## The LEAP Institute

### The San Joaquin Valley Latino Equity Advocacy & Policy Institute

(559) 851-LEAP (5327)

[svleap@gmail.com](mailto:svleap@gmail.com)

Veronica Aguirre

Executive Assistant

[vaguirre.gr@gmail.com](mailto:vaguirre.gr@gmail.com)

Ruben Rodriguez

Air Quality Monitor Technician

[rrodriguez.leap@gmail.com](mailto:rrodriguez.leap@gmail.com)

**For more information on  
CalEnviroScreen 3.0:**

<https://oehha.ca.gov/calenviroscreen>

[CalEnviroScreen@oehha.ca.gov](mailto:CalEnviroScreen@oehha.ca.gov)

