

Climate change and Sea Level Rise: Impacts on Bayview Hunters Point

In the past 100 years, sea level along the coast has risen by almost **8 inches**. According to NASA and the National Oceanic Atmospheric Administration, **2016** was the warmest year since recorded history.

The government's California Climate Action Team estimates that sea level will rise an additional **10 to 17 inches by 2050** and **31 to 69 inches or more by 2100**. San Francisco Department of the Environment predicts increases of **11 to 19 inches by 2050**, and **30 to 55 inches by 2100**. Rising sea level will cause extreme events such as:

- ♣ Coastal flooding
- ♣ Storm surge
- ♣ Coastal erosion/shoreline retreat
- ♣ Rising groundwater
- ♣ Wetland loss

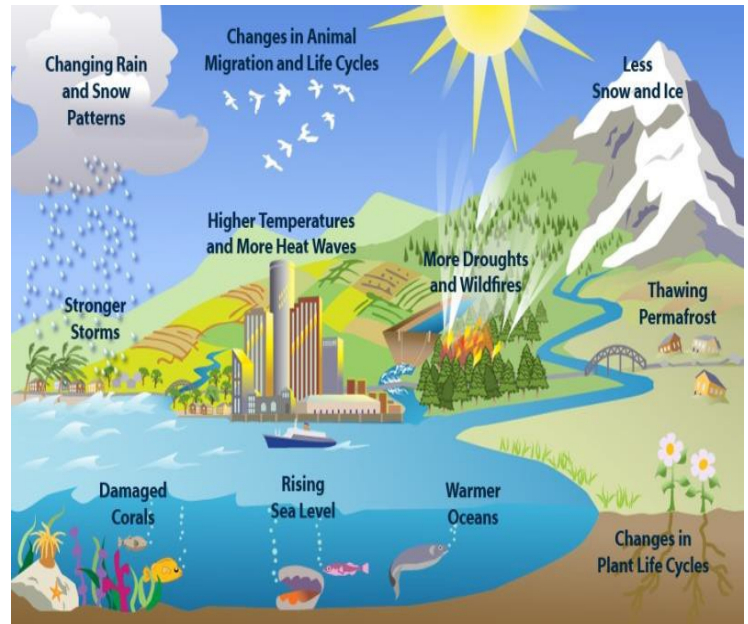
Sea Level Rise in Bay Area

2100	30-55 inches (or more)
2050	11-19 inches

Why does Sea Level Rise matter?

Flooding from sea level rise endangers people and communities living near San Francisco Bay and the ocean, and threatens:

- ♣ Neighborhoods
- ♣ Parks
- ♣ Electric utility systems
- ♣ Storm water systems/wastewater treatment plants
- ♣ Transportation
- ♣ Wetlands



Those who are most vulnerable to the threat of flooding are at risk due to the potential spread of toxic & radioactive contamination and disruption of essential services.

- ♣ Seniors
- ♣ Young children
- ♣ Low-income people
- ♣ People of color

Sea Level Rise = Toxic & Radioactive Threat to Bayview Hunters Point:

Sea Level Rise and storm surges could cause flooding of many hazardous and radioactive waste contamination sites and homes, transportation infrastructure, and utilities along the San Francisco Bay waterfront.

Unfortunately, the US Navy, government agencies and corporate mega-developers plan on leaving large amounts of radioactive and toxic waste contamination along the waterfront, threatening the health and environment of residents and of San Francisco Bay.



☠ Hazardous and Radioactive Waste Sites at Risk

BVHP's residents are exposed to many toxic pollutants and the neighborhood is already **at risk of flooding**. If the sea level rises and contaminated areas are flooded, **SF Bay and nearby neighborhoods will be further exposed to dangerous contamination**. Greenaction and residents want to make sure toxic and radioactive contamination sites are properly remediated and cleaned up and do not pose a health threat in the present as well as in the future.

Brownfield = Industrial or commercial property that is abandoned or underused and is often environmentally contaminated.

Superfund = Land contaminated by hazardous waste or other pollutants that has been identified by the Environment Protection Agency as a site for cleanup because it poses a risk to human health and the environment.

☠ Radioactive & Toxic Pollution at the Hunters Point Naval Shipyard Federal Superfund Site

The former Hunters Point Naval Shipyard is a federal Superfund site and is contaminated with radioactive and toxic pollution from decades of military and industrial use.

The Navy and Lennar Corporation plan on capping large amounts of contamination and leaving it in the ground instead of cleaning it up. With rising sea levels, this radioactive and toxic waste could spread into the Bay and into neighborhoods.

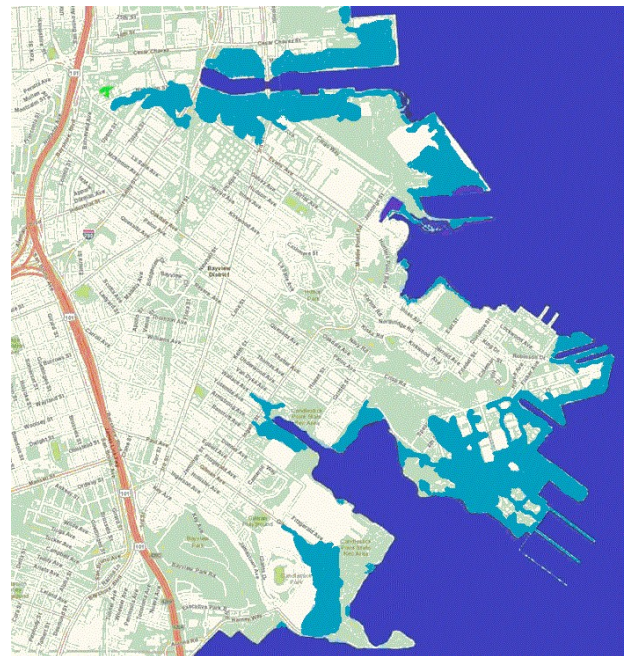
☠ Brownfields Contamination Sites

The government has identified more than 150 Brownfield sites in Bayview Hunters Point and Southeast San Francisco.

Many of these sites are being developed for large scale residential projects as well as open space and parks – but should homes and parks be built next to toxic contamination in areas threatened by flooding from sea level rise?

Sea Level Rise in Bayview Hunters Point

Map: Area at risk with 5 feet sea level rise



Source: National Oceanic and Atmospheric Administration



Contact us for more information:

315 Sutter Street, 2nd Floor

San Francisco, CA 94108

415-447-3904

www.greenaction.org

greenaction@greenaction.org

