

State of California Confirms Kettleman City at Risk from Pollution

For decades residents have voiced concern about pollution. California finally confirms Kettleman as one of the communities most vulnerable to pollution in the state.

What is CalEnviroScreen 3.0?

CalEnviroScreen 3.0 is a tool made by California Environmental Protection Agency to help identify communities most affected by pollution.

CalEnviroScreen uses the *cumulative impact theory* to compare pollution levels in communities across California.

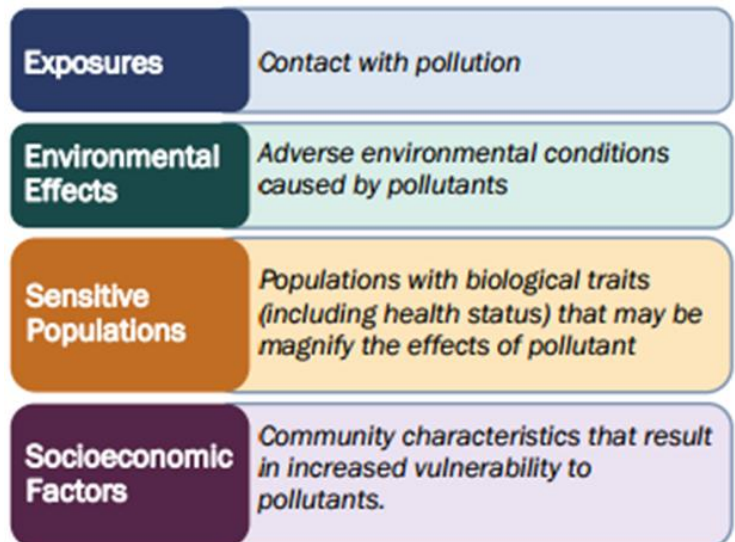
What are Cumulative Impacts?

Cumulative impacts are the combination of different factors that when added together, result in a higher impact.

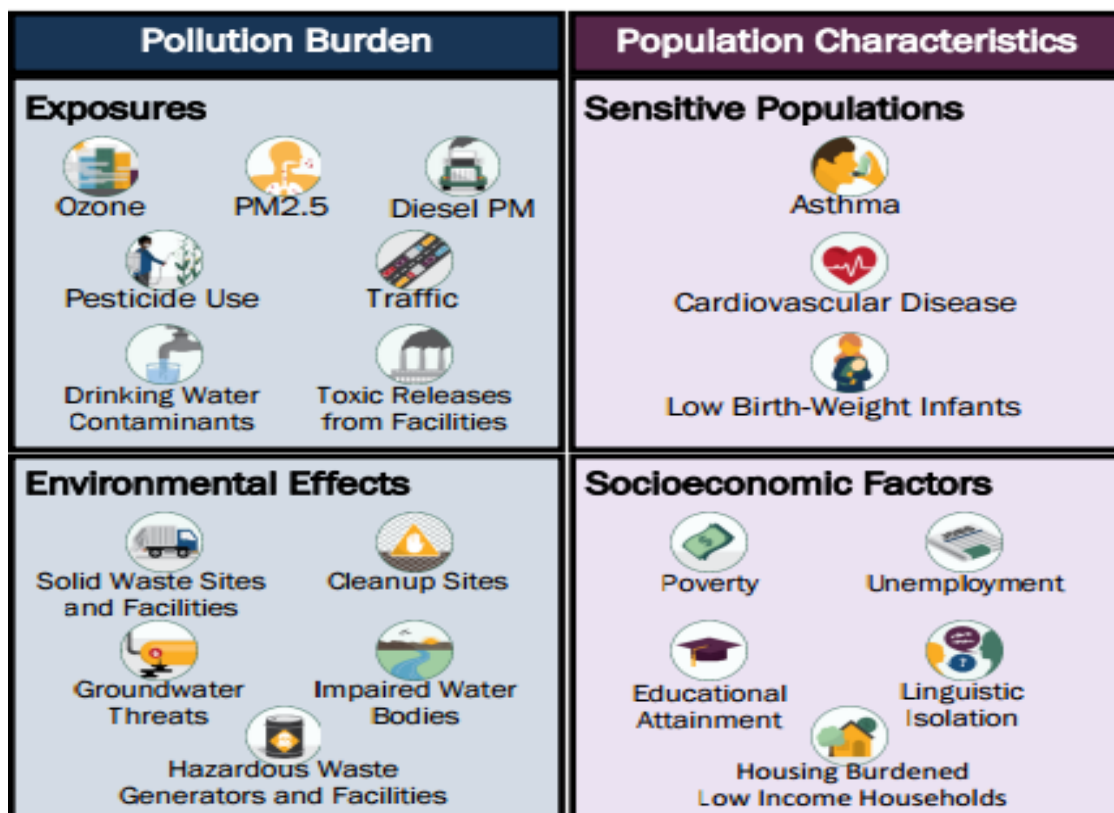
Example: Pollution + asthma + poverty = cumulative impacts!

1+1+1+1+1= too much!

CalEnviroScreen measures these indicators through these four main groups:



The CalEnviroScreen results are the pollution burden times the population characteristics.



State of California Confirms Kettleman City at Risk from Pollution

For decades residents have voiced concern about pollution. California finally confirms Kettleman as one of the communities most vulnerable to pollution in the state.

What does this mean for Kettleman City?

A community with a high percentage is experiencing a higher pollution burden and vulnerability than a community with a lower percentage in California.

Kettleman City rates in the 90% percentile on CalEnviroScreen.


This means that Kettleman City has a higher pollution burden than 90% of California.



CalEnviroScreen results for Kettleman City:

For Environmental, Health factors, or Population Characteristics, the higher the %, the more the factor affects the community.

Environmental Factors	Percentage
Pesticides	92%
Drinking Water Threats	74%
Solid Waste	85%
Health Factors	Percentage
Asthma	73%
Low Birth Weight	74%
Cardiovascular	83%
Population Characteristics	Percentage
Poverty	86%
Unemployment	74%
Lack of Formal Education	93%



How to learn more and access the tool:
Website: <http://oehha.ca.gov/calenviroscreen>
Email: CalEnviroScreen@oehha.ca.gov

The CalEnviroScreen 3.0 report (in English and Spanish), maps and additional data:
<https://oehha.ca.gov/calenviroscreen/report/calenviroscreen-30>

Contact Greenaction for Health and Environmental Justice
for more information:

315 Sutter Street, 2nd floor
San Francisco, CA 94108
(415) 447-3904

www.greenaction.org

greenaction@greenaction.org

